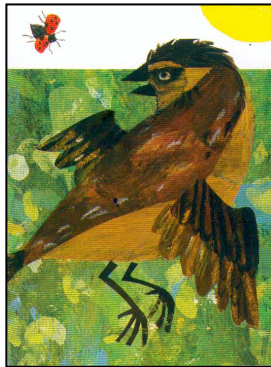
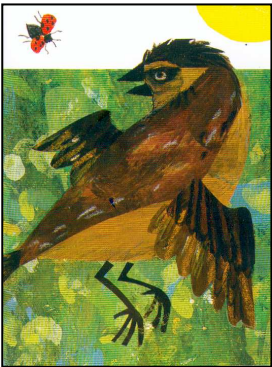


MAÎTRISE DE LA LANGUE : LA COCCINELLE MAL LUNÉE (Eric Carle)

Colorie le dessin si tu peux écrire FAUVETTE (3)(GS)



FAUVETTE



F A V

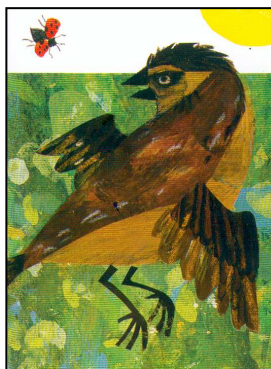
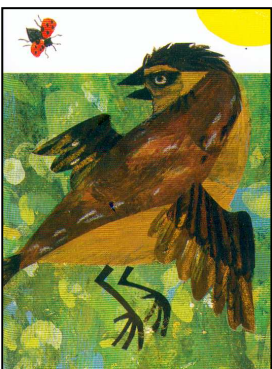
F V E T

A U V

U E T

A T E U

T T T E



V T T F

V T T A

E T T E

A U E E

U F F E

U A F V

